



**St. Mary
Magdalene**
C of E Primary School

Love to learn, learn to love

Issue 1 13.09.23

www.st-marymagdalene.sandwell.sch.uk

0121 588 2371 [headteacher@st-](mailto:headteacher@st-marymagdalene.sandwell.sch.uk)

marymagdalene.sandwell.sch.uk



Love to Learn, Learn to Love.

Dear parents and carers,

I am delighted to have been appointed as the new headteacher for St Mary Magdalene, and I am very much looking forward to getting to know all our pupils, parents, carers and staff.

I have very close connections with this area, having lived and worked in the West Bromwich area until my early twenties. I have close relatives who still live nearby and who are involved with All Saints Church. I feel like I have returned home.

I first visited St Mary Magdalene earlier this year and was immediately struck by the family atmosphere. The pupils and staff are friendly and hardworking and have made me feel at home very quickly. I have already met with lots of parents and you have expressed how much you value and appreciate the contribution that St Mary Magdalene makes to the lives of your children.

From my experience of being a teacher and Inclusion Manager for twenty years, I know that a successful and happy school depends on all of us working together. As parents and carers, you make an important contribution to your children's achievements, and I'm excited to build on the relationship that already exists between you and the school.

I will be holding a number of events over the next term, and I look forward to meeting many of you there. These meetings will take place at a number of different times in the hope that as many families as possible will have the opportunity to attend.

I will also be available in the playground before and after school, so please do say hello.

You're also welcome to contact me by telephone or email.

Kindest regards

Mrs Robinson

Staffing News

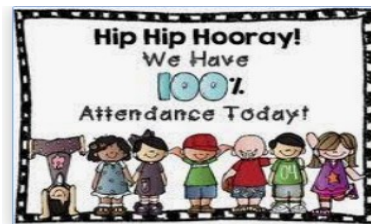
A warm welcome back to Miss Scott, Miss Regan and Ms Carter who have returned from maternity leave. The children have been really happy to see them again.

Attendance

Attendance continues to be very important. We know that every days counts.

We have a dedicated attendance officer from Sandwell LA . This year she will be supporting school to improve our overall attendance and also to reduce those who are persistently absent - BELOW 90%. Some of you may have received a letter over the summer, directly from the LA.

The National target is 95%



Attendance week commencing 2//9/2024

Whole School	Reception	Year 1	Year 2	Year 3	Year 4	Year 5	Year 6
95.4%		97.7%	100%	89.7%	97.7%	95.7%	91.7%

Collection of YR1 and YR2 children

Dear Parents,

I am concerned about the safety of YR1 and YR2 children at the end of the day. There is a large group of adults waiting outside the hall doors. This is intimidating for children and also causes some children to attempt to go with adults without their teacher knowing.

Please make two lines by the wall opposite the doors. This ensures that staff can clearly see who is waiting and dismiss children safely.

I thank you in advance for your support.

Kindest regards

Mrs Robinson

Uniform

Please ensure that your child is wearing the correct uniform everyday.

This includes their PE Kit. Our uniform is widely available at reasonable prices in all major supermarkets. Please let us know if you are experiencing difficulties as we have uniform in school.

Thank you for your donations of uniform- we now have enough to last for sometime. Please don't send in any further donations until requested.



**St. Mary
Magdalene**
C of E Primary School

Love to learn, learn to love

School Uniform

Girls - Grey skirt/dress or trousers, white polo shirt and blue school jumper/black shoes.

Boys - Grey trousers, white polo shirt and blue school jumper/black shoes.



School



Badge

School badges are iron on and for sale on ParentPay through school. Once your child has been admitted to school you will receive a ParentPay activation letter.

PE Kit

On PE days children attend school in PE kit.

PE kits need to include:

- Pumps
- Black shorts
- Black jogging bottoms
- White t-shirt
- Outside jumper



WANTED

PARENT GOVERNORS

Do you...

HAVE SOME SPARE TIME EACH MONTH (OR CAN YOU MAKE SOME)?



HAVE AN INTEREST IN HOW ST MARY MAGDALENE SCHOOL IS MANAGED?



ENJOY THE IDEA OF SHAPING THE FUTURE OF ST MARY MAGDALENE SCHOOL?



IN A WORLD WHERE EVERYONE IS SO BUSY WITH LIFE, IT'S INCREASINGLY DIFFICULT TO TRY AND FIND SPARE TIME TO MAKE A CHANGE, BUT IF YOU'VE BEEN ABLE TO TICK BOXES ABOVE, THEN YOU COULD BE AN IDEAL CANDIDATE TO JOIN THE GOVERNING BODY.

THE COMMITMENT FOR A PARENT GOVERNOR IS USUALLY AROUND **6 HOURS PER MONTH** ON AVERAGE. AS PART OF THIS, YOU'D NEED TO BE ABLE TO ATTEND THE FULL GOVERNORS BOARD, WHICH IS A CRUCIAL PART OF THE ROLE. THERE ARE ALSO SEVERAL OTHER SMALLER INTERNAL BOARDS AND COMMITTEES THAT YOU CAN VOLUNTEER TO JOIN ONTO, AS WELL AS BEING THE LEAD GOVERNOR FOR EACH OF THE SUBJECT AREAS COVERED WITHIN THE SCHOOL CURRICULUM. THIS WOULD INCLUDE TIME SPENT ATTENDING...

- **FULL GOVERNORS BOARD** – ONCE EVERY 3 MONTHS FOR AROUND 2 HOURS
- **SMALL COMMITTEE BOARD** – ONCE EVERY 3 MONTHS FOR AROUND AN HOUR
- **LEAD GOVERNORS VISITS TO SCHOOL** – EVERY 3 MONTHS FOR AROUND 30 MINUTES PER SUBJECT AREA.

The Legal Stuff...

SCHOOL GOVERNORS REPRESENT THE LARGEST VOLUNTEER FORCE IN THE COUNTRY WITH APPROXIMATELY 1% OF THE ADULT POPULATION SERVING IN THIS CAPACITY AT ANY ONE TIME. THE GOVERNING BODY OF ST MARY MAGDALENE CE PRIMARY HAS 15 GOVERNOR POSITIONS OF WHICH 5 ARE FOR PARENT GOVERNORS. PARENT GOVERNORS ARE ELECTED BY THEIR FELLOW PARENTS AND ARE VITAL TO A GOVERNING BODY BECAUSE THEY ENSURE THAT THE OTHER GOVERNORS ARE KEPT IN TOUCH WITH THE CONCERNS AND ISSUES OF MOST IMPORTANCE TO OUR PARENTS.

GOVERNORS ARE PEOPLE WHO WISH TO MAKE A POSITIVE CONTRIBUTION TO THE SCHOOL AND THE EDUCATION OF ITS CHILDREN. THEY WILL CONTRIBUTE TO THE EFFECTIVE DAY-TO-DAY RUNNING OF THE SCHOOL AND HAVE AN EFFECTIVE INPUT TOWARD THE EDUCATIONAL ACHIEVEMENTS OF ITS PUPILS.

If interested please email the Clerk to Governors Mrs T Gagliarde at trudi.gagliarde@st-marymagdalene.sandwell.sch.uk

ABOUT US

West Bromwich Emergency Pet Pantry is a group of volunteers dedicated to providing pet food to individuals and families who are experiencing financial hardship.

We believe that pets are important members of the family, and no pet should go hungry or be separated from their owners due to financial difficulties. Through our network of volunteers and food donations, we aim to ensure that pets and their owners can stay together during tough times.

Find us on Facebook

West Bromwich Emergency Pet Pantry

OR EMAIL

Louisecolledge.petpantry@gmail.com
Kellyfletcher.petpantry@gmail.com

SUPPORTING YOUR PETS
IN TIMES OF NEED



WEST BROMWICH
EMERGENCY
PET PANTRY

For more information
And referrals call

07500039967



West Bromwich
Emergency
Pet Pantry



THE PET PANTRY
NEEDS YOUR
SUPPORT

CAN YOU HELP PETS IN NEED BY DONATING
ANY UNWANTED PET FOOD AND PET
ACCESSORIES

PET FOOD DROP OFF POINTS

Lets Chat Hub, West
Bromwich Bus Station
Near Stand D
Mon- Fri 10am - 2pm

West Bromwich Leisure
Centre, Moor Street
Mon - Fri 6.30am - 10pm
Sat & Sun 8am - 8pm

The Prince Albert Pub
Sams Lane,
West Bromwich
Mon - Sun 11am - Midnight

South Staffs Water Hub
Union Street, Wednesbury
Mon/Tues/Weds/Fri
10am - 4pm
Closed Thursdays

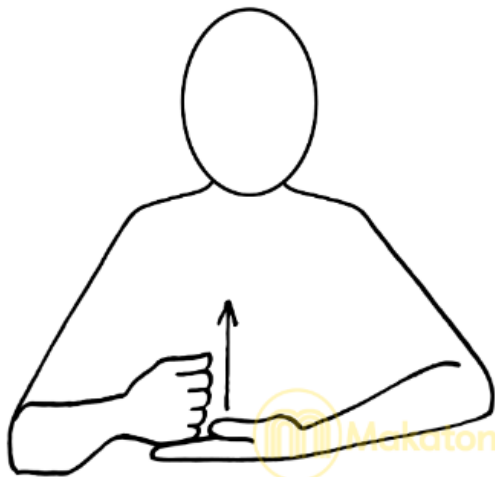
Supporting pets when owners are suffering financial hardship
Putting an end to pet food poverty

Speech and Language Support

On Friday 27th September Sophie Kingston, our school Speech and Language Therapist, will be running two workshops for parents of Nursery and Reception children. She will be talking about speech development and how you can help your child at home. The sessions will be at 9:00 - 9:30am and at 2:30 - 3:00pm. We hope you will be able to join us.

On Friday 4th October from 9:00-10:00am Sophie Kingston, our school Speech and Language Therapist, will be running a workshop especially for parents of children who use Aided Language Displays. Parents of these children have received an email already and we would urge you to join us for his informative and helpful session. If you are not sure if this applies to your child please speak to their class teacher or contact Miss Lewis at nursery@st-marymagdalene.sandwell.sch.uk

Makaton



This is the sign for 'help'. We have a number of children across school who use Makaton to communicate. Perhaps you would like to practice this sign with your child so that everyone in our school knows some Makaton and we can all communicate with each other.